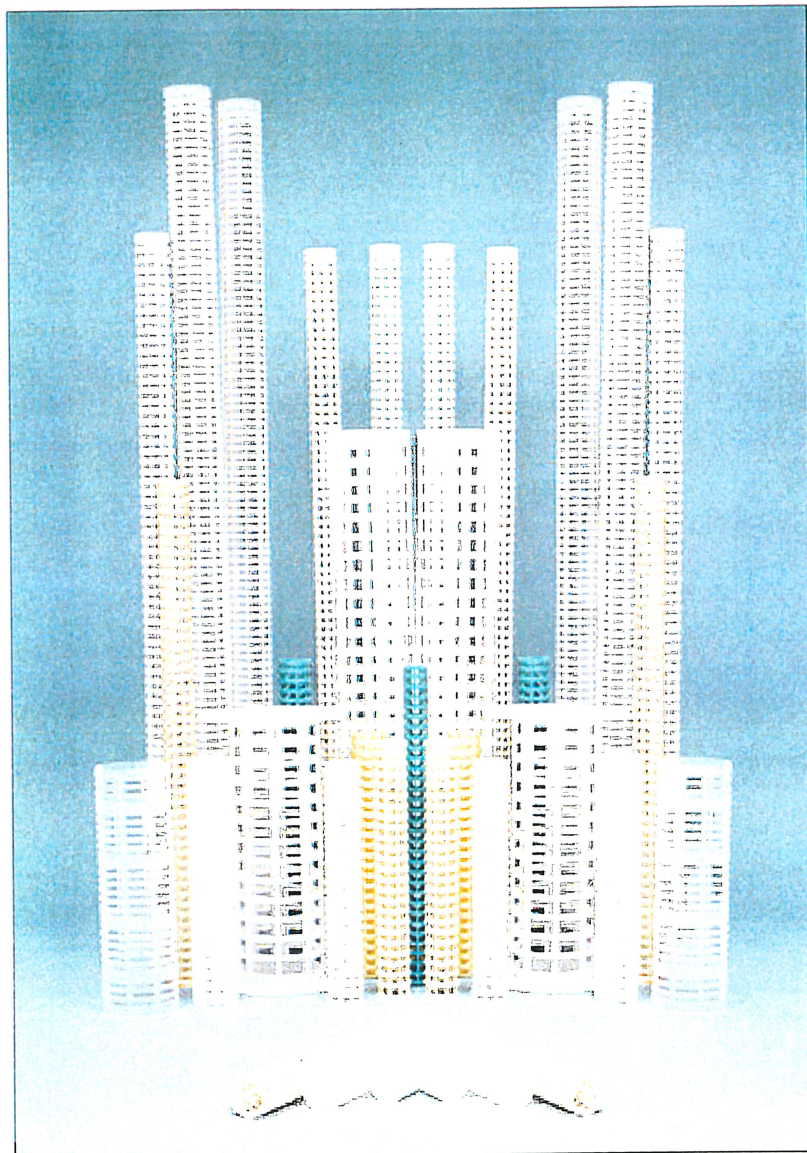


Quality, Performance and Service by Design***A COMPLETE LINE OF FILTER CORES***

For over 50 years, **Sonoco Crellin** has set the quality standard in filter cores, cages, housings, and other custom filtration components.

Today, the company provides a wide range of filter cores to many segments of the filtration market.

Sonoco Crellin Filter Cores Feature:

- Longitudinal and Radial Ribs
- A Selection of Thermoplastic Resins
- Ability to Hold Tight Tolerances
- Custom Cut Sizes

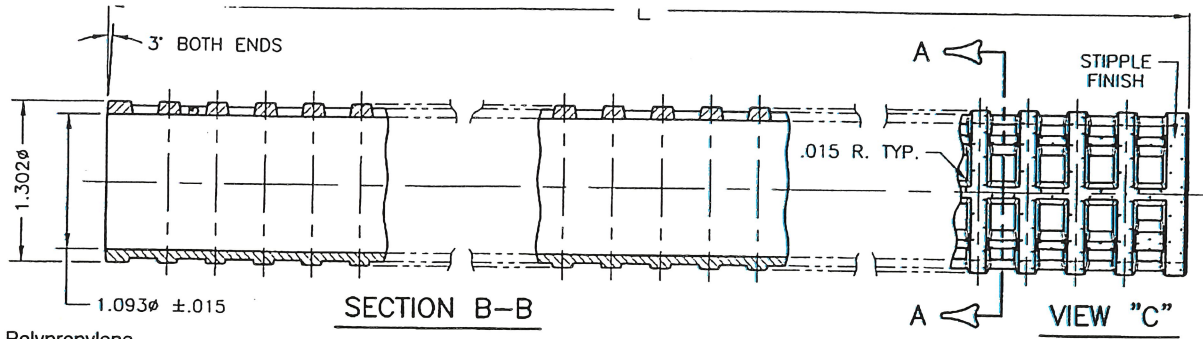
To Give Your Filters These Benefits:

- High Collapse Strength
- High Flow-Through
- Thermal Stability
- Chemical Resistance
- Flexibility to:
 - Maximize Performance
 - Minimize Cost

Sonoco Crellin
87 Center Street
Chatham, NY 12037
Tel: 518-392-1700
Fax: 518-392-6213
E-Mail: filtration@sonoco.com
www.sonococrellin.com

Crellin B.V.
Veilingweg 24
2651 BE Berkel en Rodenrijs
The Netherlands
Tel: 31-104-55-43 44
Fax: 31-104-55-12 98

Standard Wall Filter Cores



Dimensions in Polypropylene

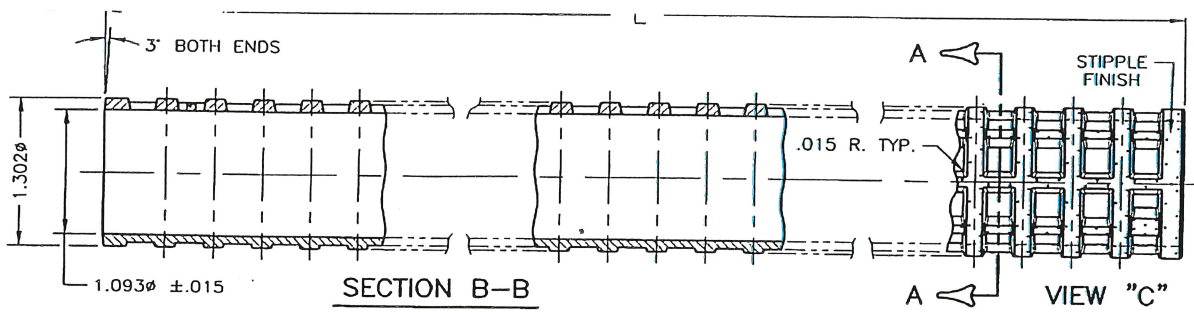
Nominal	Length	Tolerance
9-3/16"	9.188"	+/- 0.015"
9-1/2"	9.500"	+/- 0.015"
9-9/16"	9.563"	+/- 0.015"
9-5/8" No Slots	9.695"	+/- 0.015"
9-5/8" Slotted	9.695"	+/- 0.015"
9.816"	9.816"	+/- 0.015"
12-3/8"	12.375"	+/- 0.030"
19-5/8"	19.625"	+/- 0.030"
19-7/8"	19.875"	+/- 0.030"

Nominal	Length	Tolerance
20-1/16"	20.062"	+/- 0.030"
29-1/8"	29.125"	+/- 0.040"
29-3/8"	29.375"	+/- 0.040"
29-5/8"	29.625"	+/- 0.040"
29-7/8"	29.875"	+/- 0.040"
30-1/16"	30.062"	+/- 0.040"
39-7/8"	39.875"	+/- 0.060"
40-1/16"	40.062"	+/- 0.060"
41"	41.000"	+/- 0.060"

- 1.093" ID
- 0.105" Wall Thickness
- 23% Flow Through
- Custom Cut Sizes Available
- Stippled Finish
 - String-Wound and Melt-Blown Filters
 - Aids Retention of Initial Windings

- Materials Available:
 - Polypropylene
 - 40% Glass Filled Polypropylene
 - ABS
 - Acetal
 - 20% Glass Filled Nylon
 - Nylon

Thin Wall Filter Cores



Dimensions in Polypropylene

Nominal	Length	Tolerance
3-9/16"	3.562"	+/- 0.015"

1.093" ID
0.056" Wall Thickness
23% Flow Through

- Stippled Finish
 - String-Wound and Melt-Blown Filters
 - Aids Retention of Initial Windings
- Available in FDA Polypropylene