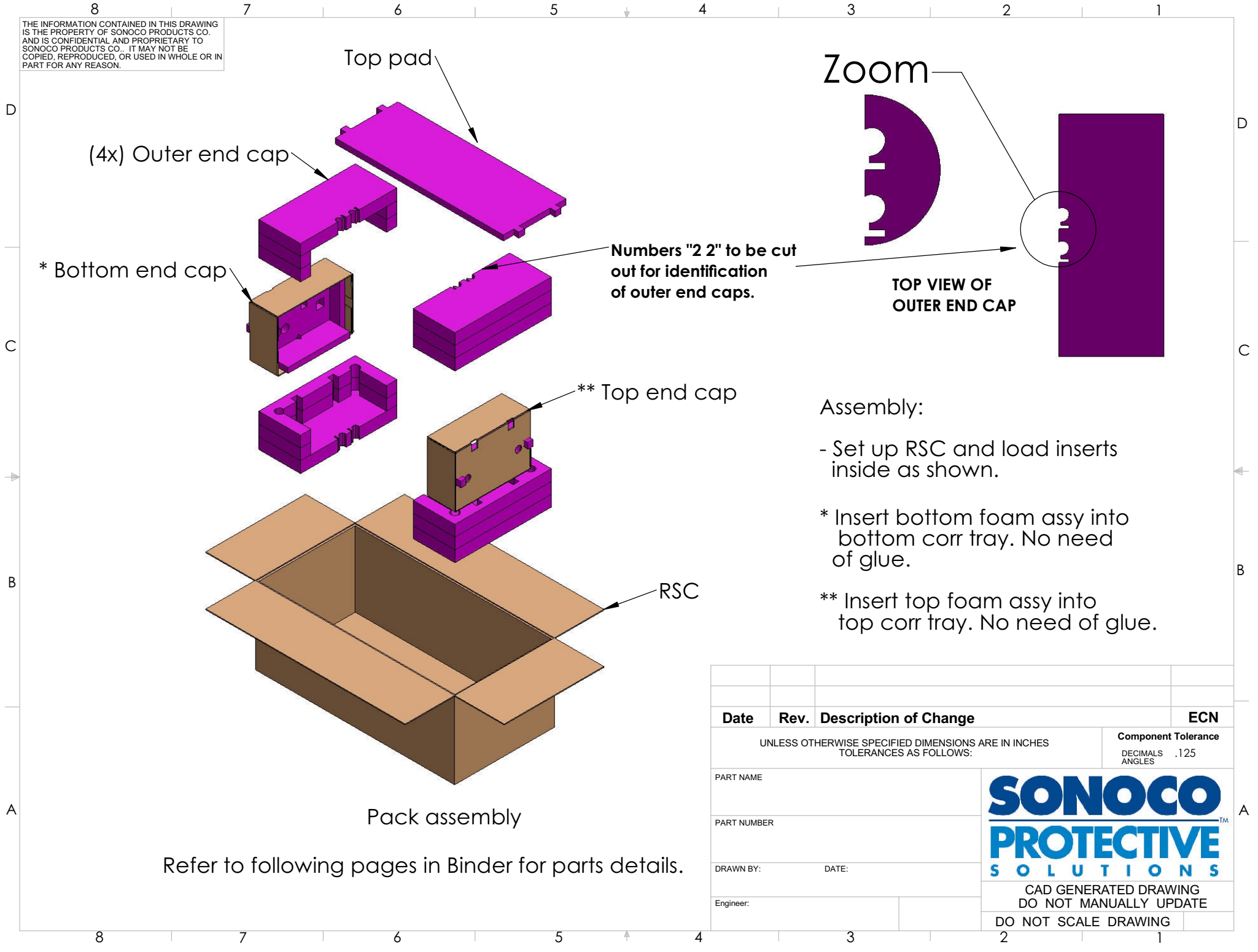


THE INFORMATION CONTAINED IN THIS DRAWING IS THE PROPERTY OF SONOCO PRODUCTS CO. AND IS CONFIDENTIAL AND PROPRIETARY TO SONOCO PRODUCTS CO.. IT MAY NOT BE COPIED, REPRODUCED, OR USED IN WHOLE OR IN PART FOR ANY REASON.



Top pad

(4x) Outer end cap

* Bottom end cap

Numbers "2 2" to be cut out for identification of outer end caps.

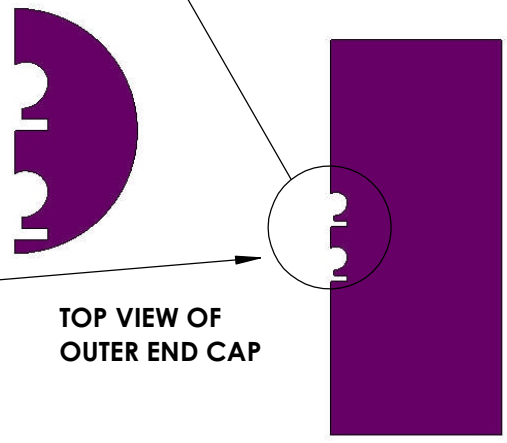
** Top end cap

RSC

Pack assembly

Refer to following pages in Binder for parts details.

Zoom



TOP VIEW OF OUTER END CAP

Assembly:

- Set up RSC and load inserts inside as shown.
- * Insert bottom foam assy into bottom corr tray. No need of glue.
- ** Insert top foam assy into top corr tray. No need of glue.

Date	Rev.	Description of Change	ECN
UNLESS OTHERWISE SPECIFIED DIMENSIONS ARE IN INCHES TOLERANCES AS FOLLOWS:			Component Tolerance DECIMALS .125 ANGLES
PART NAME			
PART NUMBER			
DRAWN BY:	DATE:		
Engineer:			
CAD GENERATED DRAWING DO NOT MANUALLY UPDATE			
DO NOT SCALE DRAWING			